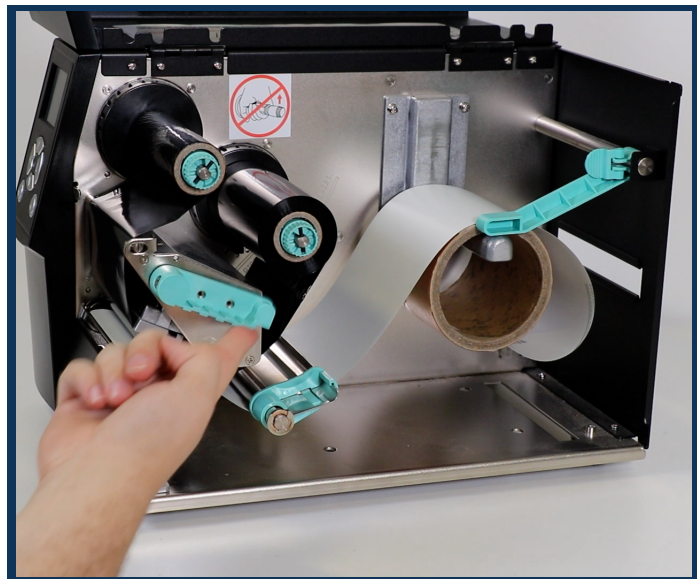
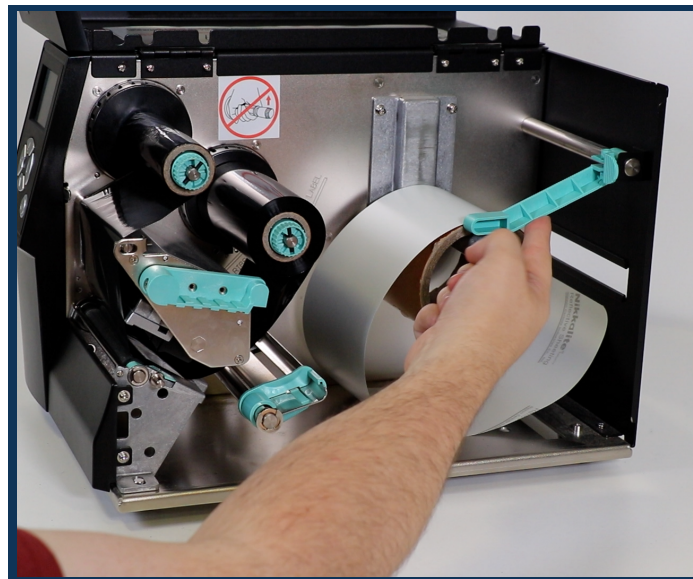


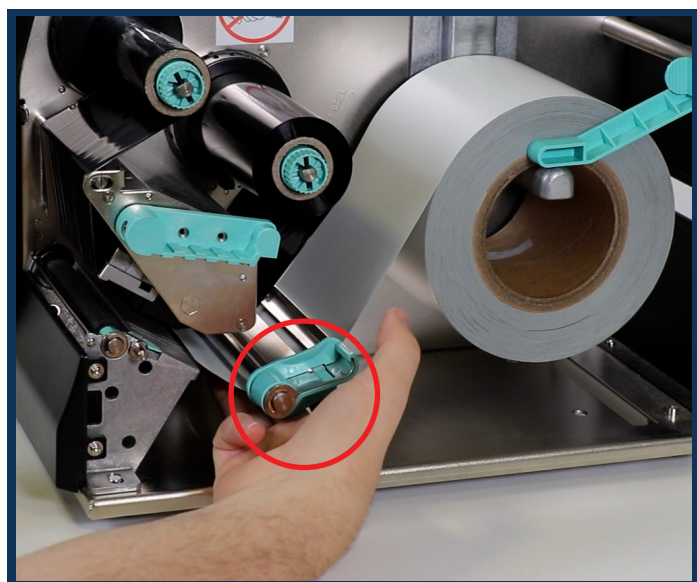
# Changing the reflective roll on your Godex ZX420 Printer



1. Open the lid of the printer. Lift the green clip at the front of the printer to lift the printhead. Roll the reflective back.



2. Lift the green lever and remove the used reflective roll. Replace with a new roll and lower the green lever.



3. Pull out the green clip towards you. Feed the reflective up and under to where the printhead sits.

Then align the end of the reflective to the end of the printer. Pull the lever down and you can begin printing. If the printer misfeeds the reflective, please check the sensor alignment guide.

If you would like further support, please contact our technical support team on:

email: [support@jepsonandco.com](mailto:support@jepsonandco.com)  
tel: 0114 273 1151



**JEPSON & CO LTD**  
FIRST IN NUMBER PLATES  
*Celebrating 150 years*