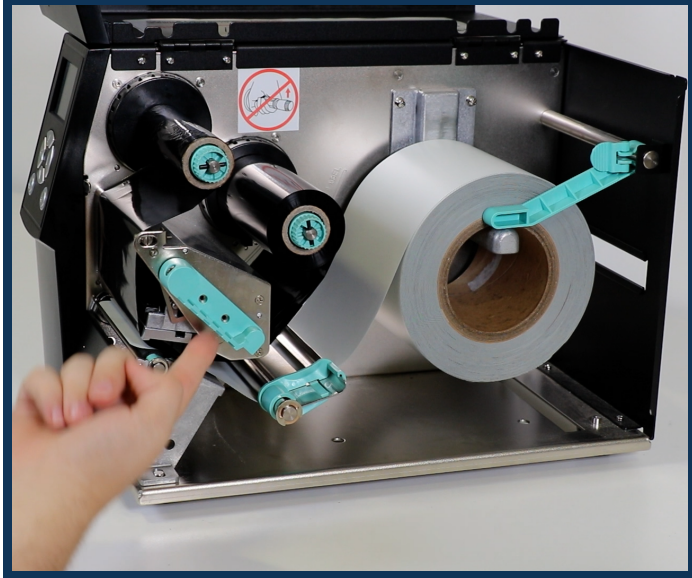
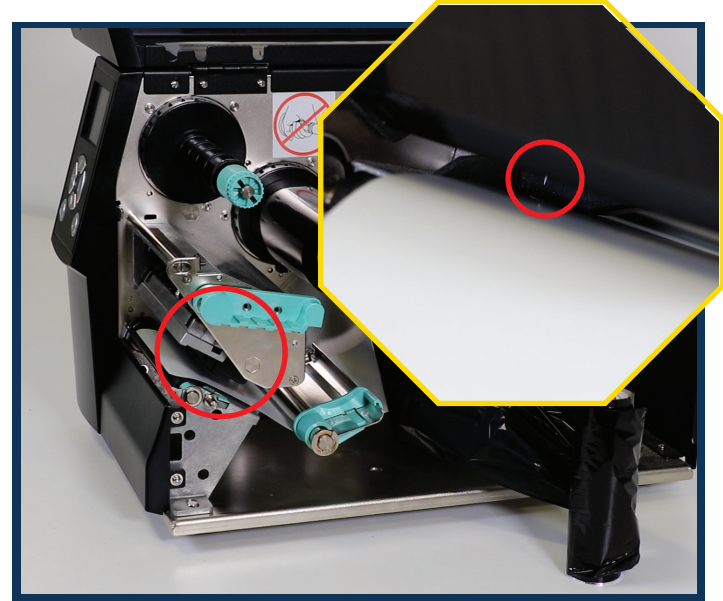


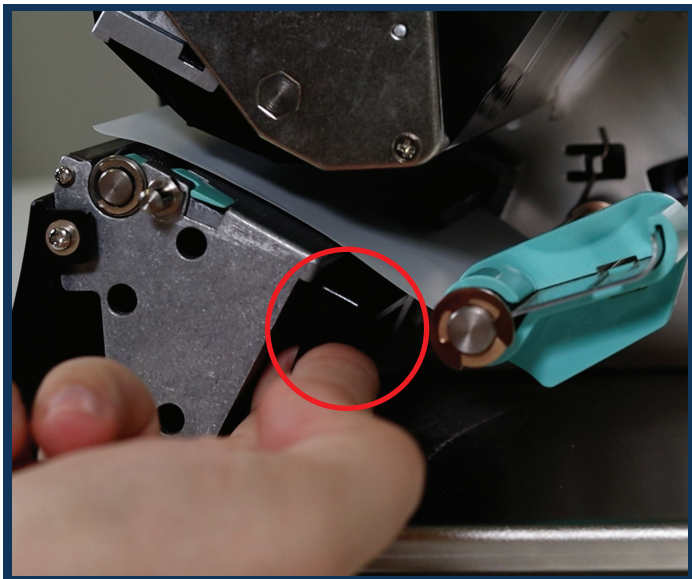
Aligning the sensor on your Godex ZX420 Printer



1. Open the printer lid and lift the green lever up to lift the printhead. Roll the ribbon to ensure it runs tight.



2. The sensor is the white mark as shown. Roll out the reflective until the perforation aligns with the white marker.



3. Pull the lever as shown - your printer is now aligned to the roll.

Feed the reflective back through and push the lever down, to lower the printhead.

Close the printer lid - you can begin printing again.

If you would like further support, please contact our technical support team on:

email: support@jepsonandco.com
tel: 0114 273 1151